

Power Switches

Extract from the main catalogue



No. 5.4

HardBoot

Description

The **HardBoot** is a remote power switch. It controls the AC power supply of remote targets like servers, routers and hubs.

The **HardBoot master** can control the power supply of 8 target devices. By cascading of the **HardBoot master** with up to 4 **slaves** the number of switchable ports can be increased up to 40.

Two independent, redundant power supply circuits, the possibility to combine up to 3 power ports to one group and switching them together makes the system ideal for „mission critical“ servers with redundant power supply.

Usage application

In your appliance you can use the **HardBoot** with or without the master device.

1. As stand alone:

The **master** gets integrated into the network with an IP address. The control is done over ethernet. Via daisy chaining the slave devices can be cascaded.

2. In combination with a G&D KVM switch:

Instead of the **HardBoot master** the KVM switch does the controlling. Operation is done via OSD.

Each of the slaves can switch 8 power ports. So 32 target devices can be switched within one power cluster.



front view HardBoot master



rear view HardBoot master or slave

Features

- individual control of up to 40 power ports over one IP address
- individual reboot of non-available target devices
- automatical reboot of target devices after a user defined time is possible
- access over ethernet with **HardBoot view Toolware** or serial access via Hyper Terminal or OSD (in combination with G&D KVM switch)
- access password protected
- status LEDs
- 2 separately fused electric circuits, galvanic separated
- up to 120 A surge current per device
- HiAmp technology for trouble-free switching on of devices with high surge current
- group function for convenient handling
- free naming of target devices
- high packing density within 1 U

HardBoot

Quick info

Characteristics

Electronic switch for the AC power supply with remote access

Configuration

Compact system for up to 8 devices

Extendibility

Up to 40 devices

Maximum total current

2 x 10 A

Specialities

group switching possible, 3 independent electric circuits, remote access over TCP/IP

HardBoot

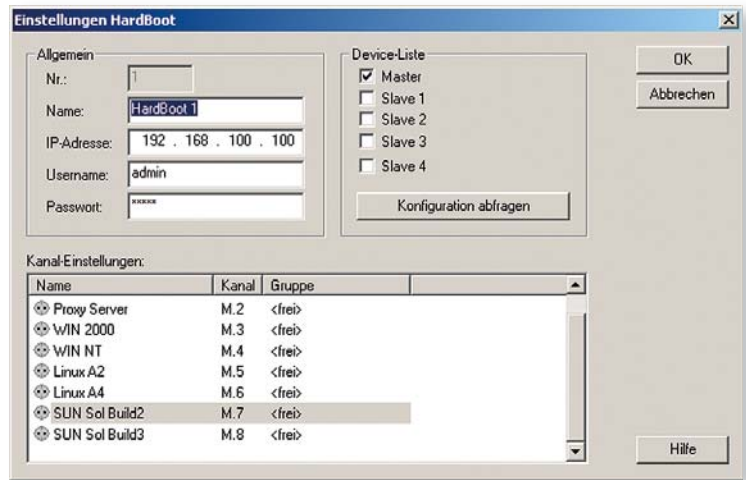


Installation

The target devices are connected with the HardBoot via power cords. After the first set-up over a terminal program, the HardBoot master gets integrated into the network using the link connectors.

With the **HardBoot view Toolware** you directly have access to all needed settings and can start working immediatly.

When using a KVM switch you connect the first slave with the serial port of the KVM switch.



screenshot HardBoot View

Redundancy

Each **HardBoot** works with two independent electric circuits (phases), which are galvanically isolated.

That's an important function especially for „mission critical“ servers. Here you can assign up to three power sources to one server, which cover even more than one phase. At failure of the first power source the power supply of the device will be maintained by that redundancy.

Certainly the independent electric circuits can be switched together to switch off a server. Up to 3 power sources can make a group and can be switched together.

Specifications: HardBoot

AC-input	200 - 250 V 2 x power cord plug
AC-output	2 x 4 power cord jack
Max. switching current - per device (m + s) - per consumer	2 x 10 A per device (master and slave) 10 A each separate circuit 10 A continuous current, 120 A peak current
Fuse	2 x 10 A, time lag
Power supply HardBoot controller	redundant, through one or both connected power supplies, automatic changeover
Max. AC-outputs	40 per cluster (1 x 8 of masters, 4 x 8 of slaves) by daisy chaining, RJ9 cable
Serial access	master: D-Sub, 9-pin
Network	IEEE 802.3 - 10BaseT*
Network connection	1 x RJ45 jack*
Protocol	TCP/IP
Operating temperature	0 - 50° C
Humidity	10 - 80 %, non condensing
Case (w x h x d in mm)	485 x 45 x 150 19" x 1 U x 150 metal case
Weight	2,4 kg
Variants	rack mount (19" mounting kit in scope of delivery)

* master only © All used trade names are registered trademarks of the corresponding companies. Technical changes excepted. Illustrations exemplary. Descriptions reflect the max. extension level. (1 = functional speciality)